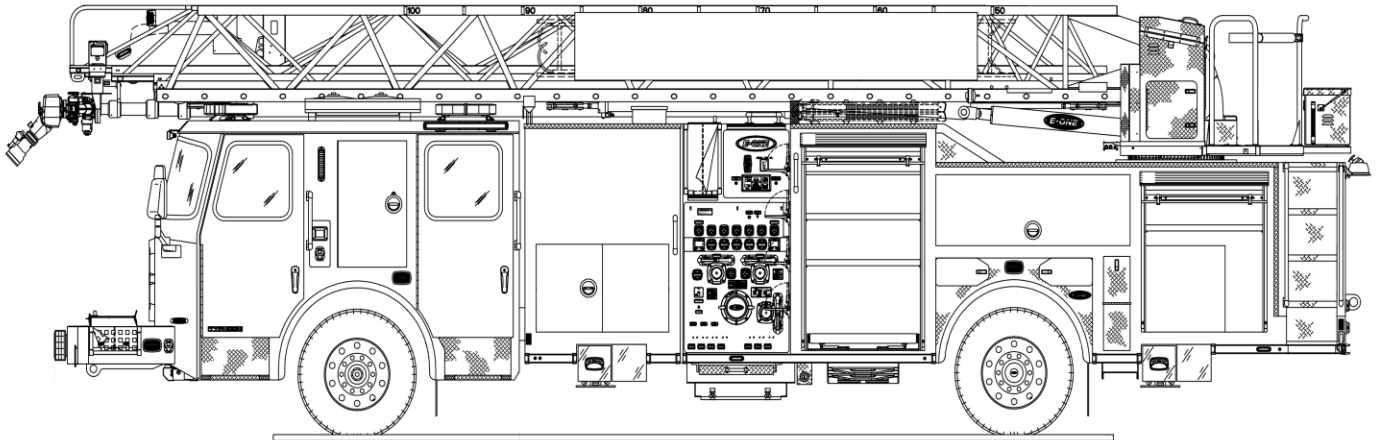




KITTERY, ME

SELECT SERIES™ 100' AERIAL

Truck # 148242



CHASSIS

- Typhoon 58" extruded aluminum cab, lowered cab steps, barrier style doors, severe duty interior
- Cummins X12 500 HP engine with Jacobs compression brake and Allison EVS 4000P transmission
- Dana I220W 24,000 lb front axle
- Meritor RS-35-185 35,000 lb rear axle
- Dana ABD22X 17" disc front and Bendix 16.5x8.625" S-cam rear with G4 electronic stability control
- 59,000 lbs. GVWR
- 235" wheelbase integral torque box frame, 12" high HD front bumper, 28" extension with (2) bumper crosslays
- 11'-7" +/- 2" travel height
- 39'-10" +/- 1" overall length

BODY FEATURES

- Extruded aluminum body with SideStacker hosebed
- Raised rear body for improved departure angle
- Full height rescue style driver and forward officer side compartments with enclosed wheel well storage for (8) SCBA bottles, (3) lift-up hosebed access doors, painted roll-up doors
- Rear tunnel with 127 feet of ground ladders, (4) pike poles and 17-foot Little Giant Model 17 on body

PUMP & PLUMBING

- Waterous S100C22 2000 GPM pump with FRC TGA400 pressure governor
- 470-gallon UPF Poly III water tank
- (3) 2.5" side panel discharges, 4" right side panel and waterway discharge with electric valve

AERIAL FEATURES

- 100-foot aerial with 2.5:1 structural safety factor and -6 degree travel
- Welded extruded aluminum construction
- Crisscross underslung outriggers (11-foot jack spread)
- Rated capacity: 500 lbs. + 75 lbs. equipment
- Advanced Aerial Control System

ELECTRIC & WARNING

- Weldon V-MUX Multiplex electrical system with driver and officer Vista IV displays, Safety Vision® officer and rear cameras
- Vehicle data recorder with CrewGuard™ occupant detection
- (4) Whelen Mini-Freedom IV LED light bars, Whelen L31H LED upper rear beacons, M6/ION-T LED lower level warning lights



KITTERY FIRE DEPARTMENT KITTERY, ME

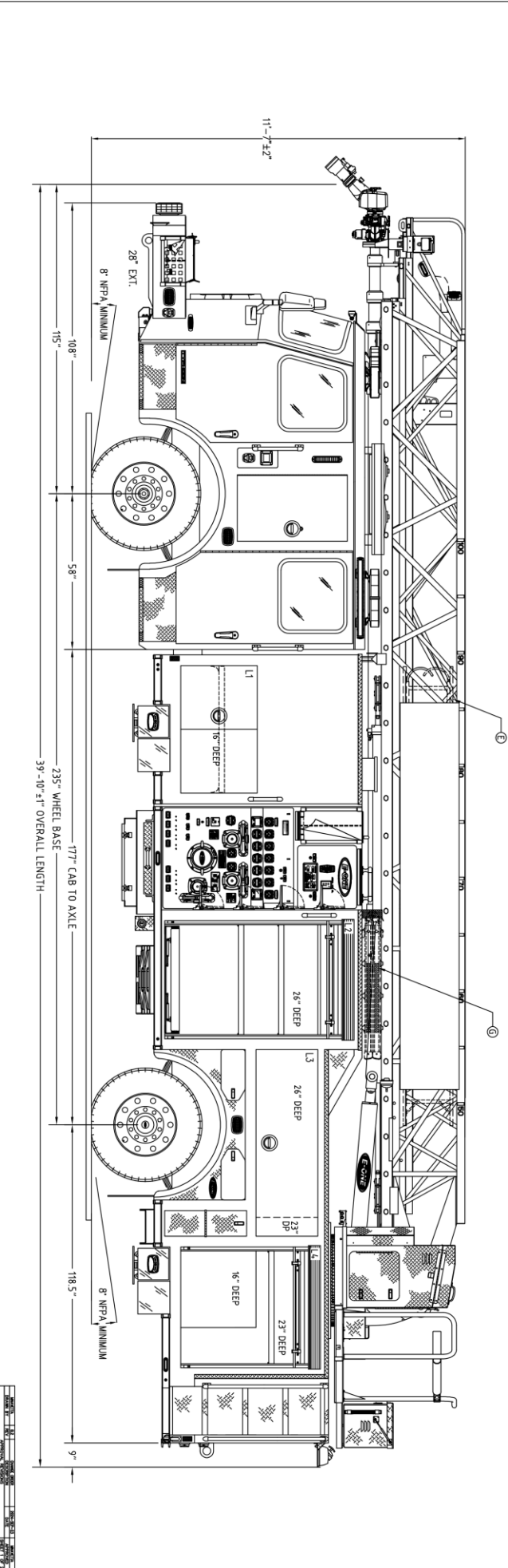
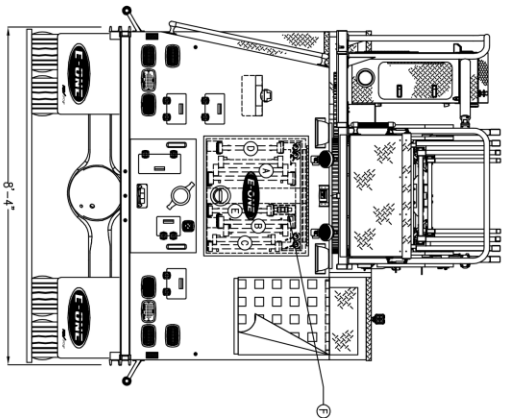
S.O. 148242 / QUOTE 135487
AERIAL BODY W/ SIDE STACKER HOSEBED
E-ONE TYPHOON CHASSIS
HR100 LADDER

THIS DRAWING IS FOR REFERENCE PURPOSES. ALL DIMENSIONS ARE SUBJECT TO MINOR VARIATIONS DUE TO MANUFACTURING PROCESSES.

DEALER APPROVAL _____ DATE _____ CHAS IS _____
CUSTOMER APPROVAL _____ DATE _____ WITH REVISIONS _____

| 2000 GPM WATEROUS ESU1 PUMP | | HOSE LOAD: | |
|-----------------------------|---------|--------------------|-------------------|
| 470 GALLON WATER TANK | | NFPA COMPLIANT | |
| COMPT. | OPENING | INTERIOR DIMENSION | |
| L1 | 47W | 28H | 28H 16D |
| R1 | 29W | 28H | 29W 16D |
| L2 | 42W | 60H | 44W 19H 21D UPPER |
| R2 | 42W | 60H | 44W 19H 21D UPPER |
| L3 | 69W | 23H | 69W 23H 28D LOWER |
| R3 | 25W | 24H | 25W 24H 16D |
| L4 | 43W | 42H | 43W 28H 21D UPPER |
| R4 | 40W | 27H | 40W 27H 28D LOWER |

| ITEM | LADDER LENGTH | MODEL NUMBER | QTY |
|------|---------------|--------------|-----|
| A | 35'-3-SECT. | PEL-3-35 | 1 |
| B | 28'-2-SECT. | PEL-28 | 1 |
| C | 24'-2-SECT. | PEL-24 | 1 |
| D | 16' ROOF | PEL-16 | 1 |
| E | 14' ROOF | PEL-14 | 2 |
| F | 10' FOLDING | FL-10 | 1 |
| G | LITTLE GIANT | MODEL-17 | 1 |



Date Printed: 2024-11-19 at 11:41:58 EST
Location: /Default/48000/148242/Sales Drawings

Username: gmilller
P/N: S148242

Creator: Navetta, Marc

Version: B.2

State: Released

Context: Aerial