



OCALA FIRE RESCUE

OCALA, FL

S.O 143404-405 / Q97439

PUMPER

TYphoon 4X2 CHASSIS

1250 GPM HALE QFLO PUMP		HOSE LOAD:	
780 GALLON WATER TANK		200' OF 2.50" D.J.	
		1000' OF 5.00" LDH	

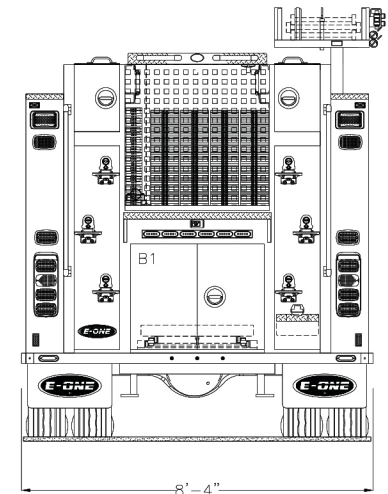
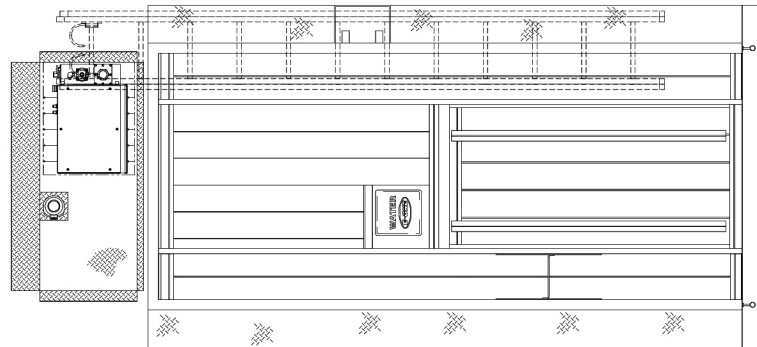
COMPT.	OPENING		INTERIOR DIMENSION			
L1	42W	68H	42W	12H	12D	UPPER
			42W	56H	26D	LOWER
R1	42W	68H	42W	12H	12D	UPPER
			42W	56H	26D	LOWER
L2	56W	34H	56W	12H	12D	UPPER
			56W	22H	26D	LOWER
R2	33W	34H	33W	12H	12D	UPPER
			33W	22H	26D	LOWER
L3	56W	68H	56W	56H	26D	LOWER
R3	56W	68H	56W	24H	12D	UPPER
			56W	56H	26D	LOWER
B1	38W	30H	38W	30H	41D	

THIS DRAWING IS FOR REFERENCE PURPOSES. ALL DIMENSIONS ARE SUBJECT TO MINOR VARIATIONS DUE TO MANUFACTURING PROCESSES.

APPROVED FOR PRODUCTION

DESIGNER: ALICIA RIOSECO DATE: 2019-JUL-24

ALL SELECTED ITEMS ARE NOT SHOWN IN TOP VIEW FOR CLARITY OF BODY CONFIGURATION.



8'-4"

HOSEBED HEIGHT:
(FOR REFERENCE ONLY)
TO TAILBOARD: 42"
TO GROUND: 66"

